

Hearth Cabinet™

VENTLESS FIREPLACES



*COLOR, DIMENSION AND DESIGN MAY VARY BASED ON CUSTOMIZATION.

STANDARD

INTERIOR FINISH:

- STAINLESS STEEL (FINISH# 1105)

CARTRIDGE HOLDER INSERT:

- STAINLESS STEEL HOLDER (PART# 401-903)

OPTIONS

CARTRIDGE HOLDER INSERT OPTIONS:

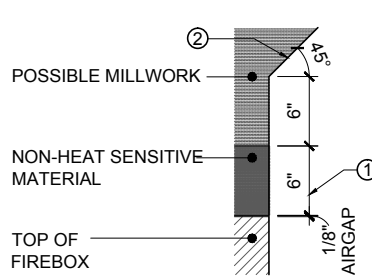
- RIVER STONES CARTRIDGE HOLDER (PART# 401-905)
- CLEAR GLASS CHIPS CARTRIDGE HOLDER (PART# 401-907)
- INDIVIDUAL STACKING LOGS (PART# 401-901)

2-SIDED SEE THROUGH
BLACK CUSTOM FIREBOX
MODEL #702

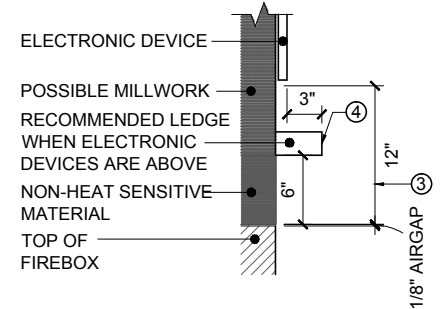
SPECIFICATIONS & DIMENSIONS:

- CUSTOM FIREBOX TO BE SECURED TO BASE (PROVIDED BY OTHERS) BY CONTRACTOR WITH FOUR SCREWS IN HOLES PROVIDED. NO OTHER ATTACHMENTS TO THE CUSTOM FIREBOX ARE PERMITTED.
- DO NOT PUNCTURE BACK, TOP, FRONT OR SIDE WALLS OF CUSTOM FIREBOX IN ANY FASHION.
- NO WEIGHT TO BE PUT ON FIREBOX.
- MILLWORK OR WALL ABOVE MUST BE SELF SUPPORTED AND MAY NOT REST ON FIREBOX.
- ALL WALL TREATMENTS BY OTHERS. FIRE RATED ASSEMBLIES OF PARTITIONS AND ANY OPENINGS ON PARTITIONS ARE THE RESPONSIBILITY OF OTHERS.
- BASE PROVIDED BY OTHERS MUST BE ABLE TO SUPPORT 40 LBS PER SQUARE FOOT.
- ALLOW 1/8" CLEARANCE ON TOP AND SIDES OF FIREBOX FRAME.

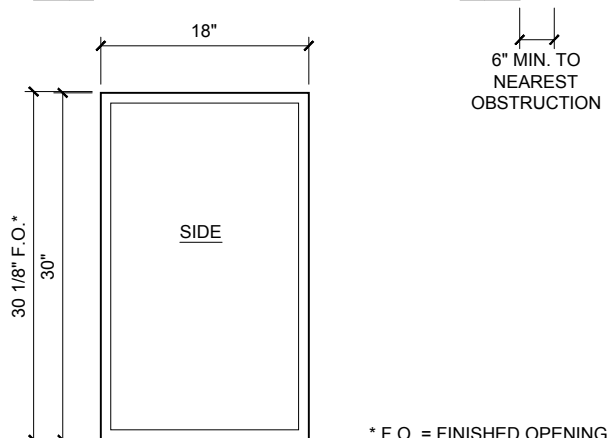
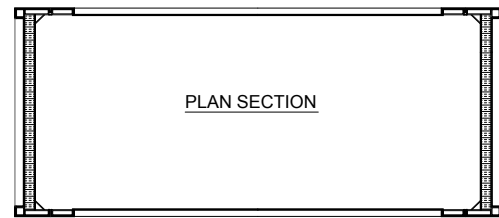
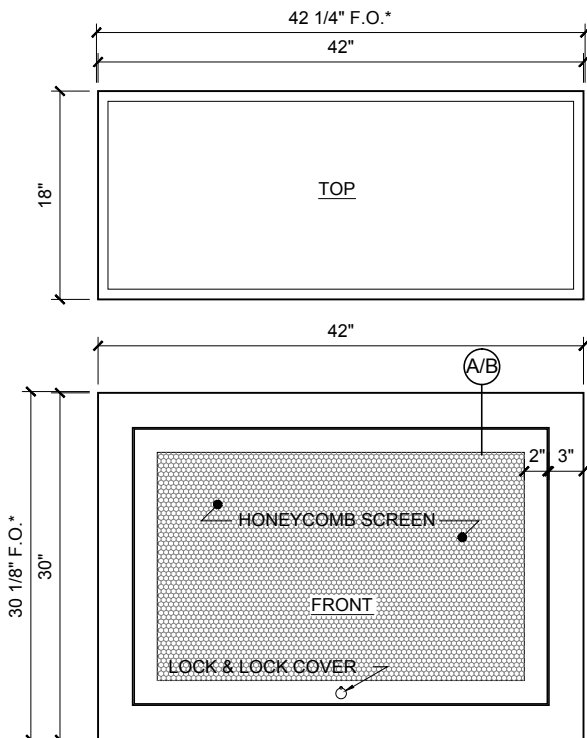
- ① NO WOOD, LAMINATES, OR HEAT SENSITIVE MATERIALS MAY OCCUR ABOVE THE FACE OF THE FIREBOX FOR THE FIRST 6" ABOVE THE FIREBOX
- ② MILLWORK COMMENCING 12" ABOVE THE FIREBOX MAY PROTRUDE PAST THE FACE OF THE FIREBOX AT A 45 DEGREE ANGLE
- ③ 12" MINIMUM CLEARANCE TO NEAREST ELECTRONIC DEVICE OR AS SPECIFIED BY PRODUCT MANUFACTURER
- ④ A NON-HEAT SENSITIVE LEDGE (BY OTHERS) MUST PROTRUDE A MIN. OF 3" PAST THE FACE OF ELECTRONIC DEVICE FOR HEAT DEFLECTION ABOVE FIREBOX AND BELOW ELECTRONIC DEVICE



Ⓐ SECTION DETAIL @ MILLWORK



Ⓑ SECTION DETAIL @ ELECTRONIC DEVICE



* F.O. = FINISHED OPENING

NY HEARTH CABINET CO., INC. 250 WEST 26TH STREET NEW YORK, NY 10001 T:212.242.3234 F:212.242.3304 info@hearthcabinet.com

www.hearthcabinet.com

© Copyright 2013 NY Hearth Cabinet Co., Inc.

Hearth Cabinet™

VENTLESS FIREPLACES



STANDARD

INTERIOR FINISH:

- STAINLESS STEEL (FINISH# 1105)

CARTRIDGE HOLDER INSERT:

- STAINLESS STEEL HOLDER (PART# 401-903)

OPTIONS

CARTRIDGE HOLDER INSERT OPTIONS:

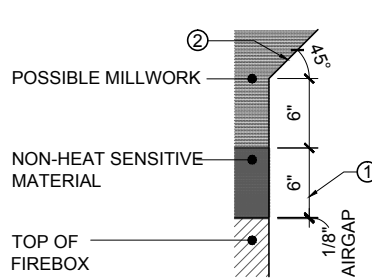
- RIVER STONES CARTRIDGE HOLDER (PART# 401-905)
- CLEAR GLASS CHIPS CARTRIDGE HOLDER (PART# 401-907)
- INDIVIDUAL STACKING LOGS (PART# 401-901)

2-SIDED SEE THROUGH
STAINLESS STEEL CUSTOM FIREBOX
MODEL #701

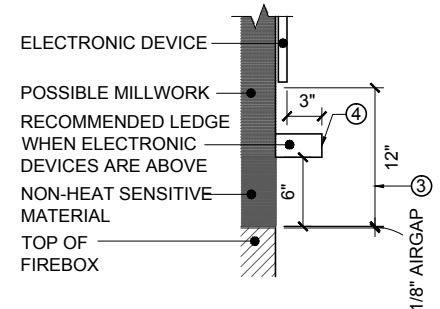
SPECIFICATIONS & DIMENSIONS:

- CUSTOM FIREBOX TO BE SECURED TO BASE (PROVIDED BY OTHERS) BY CONTRACTOR WITH FOUR SCREWS IN HOLES PROVIDED. NO OTHER ATTACHMENTS TO THE CUSTOM FIREBOX ARE PERMITTED.
- DO NOT PUNCTURE BACK, TOP, FRONT OR SIDE WALLS OF CUSTOM FIREBOX IN ANY FASHION.
- NO WEIGHT TO BE PUT ON FIREBOX.
- MILLWORK OR WALL ABOVE MUST BE SELF SUPPORTED AND MAY NOT REST ON FIREBOX.
- ALL WALL TREATMENTS BY OTHERS. FIRE RATED ASSEMBLIES OF PARTITIONS AND ANY OPENINGS ON PARTITIONS ARE THE RESPONSIBILITY OF OTHERS.
- BASE PROVIDED BY OTHERS MUST BE ABLE TO SUPPORT 40 LBS PER SQUARE FOOT.
- ALLOW 1/8" CLEARANCE ON TOP AND SIDES OF FIREBOX FRAME.

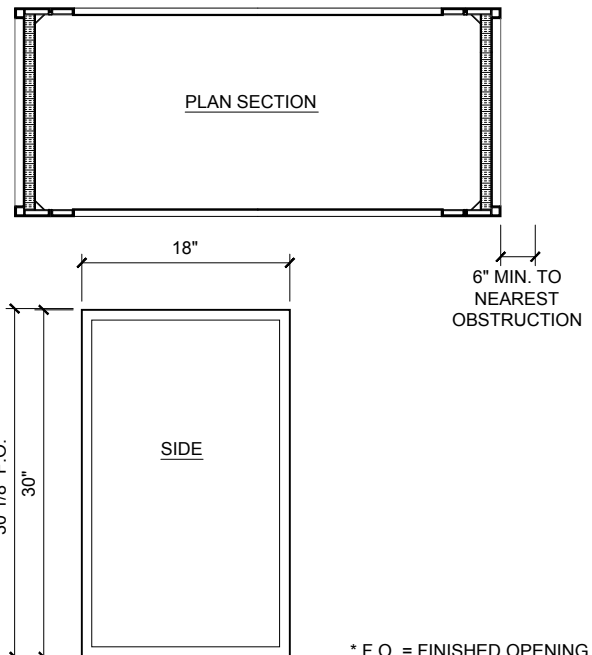
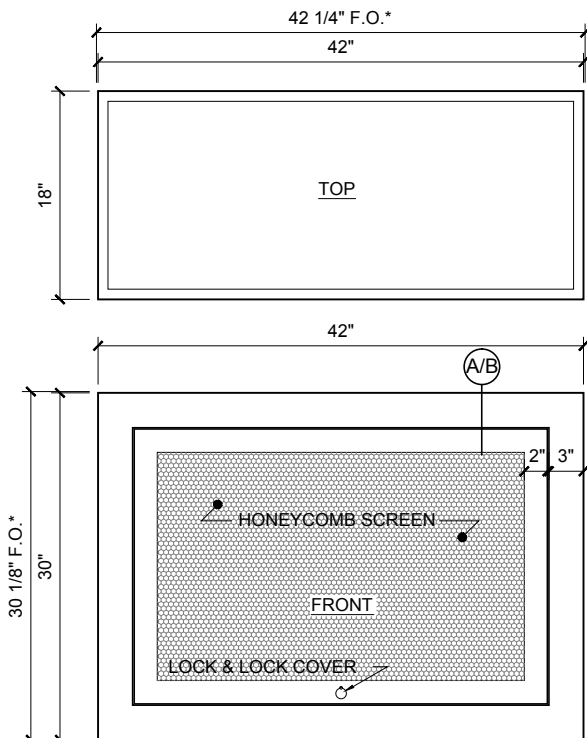
- ① NO WOOD, LAMINATES, OR HEAT SENSITIVE MATERIALS MAY OCCUR ABOVE THE FACE OF THE FIREBOX FOR THE FIRST 6" ABOVE THE FIREBOX
- ② MILLWORK COMMENCING 12" ABOVE THE FIREBOX MAY PROTRUDE PAST THE FACE OF THE FIREBOX AT A 45 DEGREE ANGLE
- ③ 12" MINIMUM CLEARANCE TO NEAREST ELECTRONIC DEVICE OR AS SPECIFIED BY PRODUCT MANUFACTURER
- ④ A NON-HEAT SENSITIVE LEDGE (BY OTHERS) MUST PROTRUDE A MIN. OF 3" PAST THE FACE OF ELECTRONIC DEVICE FOR HEAT DEFLECTION ABOVE FIREBOX AND BELOW ELECTRONIC DEVICE



Ⓐ SECTION DETAIL @ MILLWORK



Ⓑ SECTION DETAIL @ ELECTRONIC DEVICE



* F.O. = FINISHED OPENING

NY HEARTH CABINET CO., INC. 250 WEST 26TH STREET NEW YORK, NY 10001 T:212.242.3234 F:212.242.3304 info@hearthcabinet.com

www.hearthcabinet.com

© Copyright 2013 NY Hearth Cabinet Co., Inc.